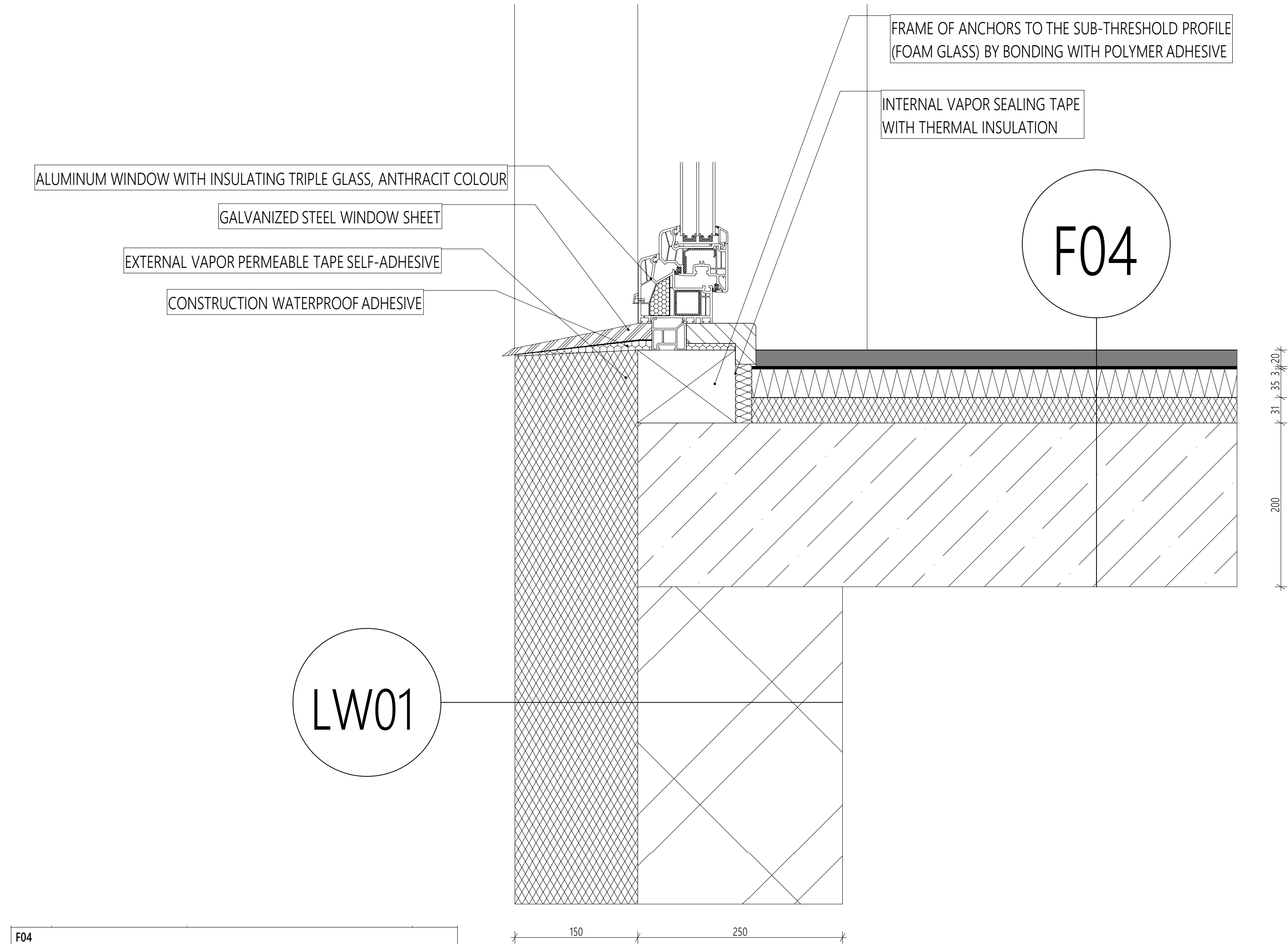


DETAIL B - DETAIL OF WINDOW PARAPET



F04			
	SURFACE FINISH	Ceramic floor	8
	BINDING LAYER	Cement adhesive	5
	WATERPROOF LAYER	Hydro insulation paint layer	1
	SEPARATION LAYER	Separation layer - PE foil	1
	ACOUSTIC LAYER	Fermacell isolation	30
	THERMAL INSULATION	THERMAL INSULATION - polystyren EPS	35
	LOAD BEARING	Reinforced concrete	200
	PENETRATION LAYER	Penetration layer	1
	SURFACE FINISH	Plaster - indoor	10

LW01			
	SURFACE FINISH	Plaster - outdoor	10
	THERMAL INSULATION	THERMAL INSULATION - polystyren EPS	150
	BINDING LAYER	Cement adhesive	5
	LOAD BEARING	LOAD BEARING MASONRY WALL POROTHERM...	250
	PENETRATION LAYER	Penetration layer	1
	SURFACE FINISH	Plaster - indoor	10

0,000 = 395,100		m.a.s.l., B.H.S. / COORDINATE SYSTEM S-JTSK		
COURSE	BACHELOR'S THESIS			
DRAWN BY	ŠIMON MADZIK			
SUPERVISED BY	Ing. JAN MÜLLER, Ph.D.			
INVESTOR	-			
LOCATION	PASOHLÁVKY, 691 22, PARCEL 3163/596			
PROJECT TITLE	GUESTHOUSE IN PASOHLÁVKY			
<div><div>T</div><div>FAKULTA STAVEBNÍ ústav pozemního stavitelství</div></div>				
BUILDING OBJECT	BO 01 GUESTHOUSE IN PASOHLÁVKY		PAPER FORMAT	4xA4
PART	D.1.2 BUILDING STRUCTURAL SOLUTION		DATE	10/2022
DRAWING TITLE :	DETAIL B - WINDOW PARAPET		PROJ. PHASE	DPS
			SCALE 1:5	DRAWING NO.